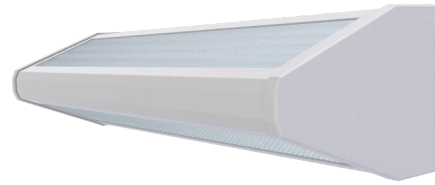


Project	
Type	
Date	
Product Code	
Approved by	

MDWB - Medical Patient Bi-Directional

Surface Wall Mount Bi-Directional
Patient Bed Luminaire
T5, T5HO, T8 Lamps
Suitable for Patient Rooms



3587

Medical
Facility

Product Specifications - Application

The MDWB series by Certolux is a specification-grade, Wall mount, Bi-Directional, Patient bed luminaire. Available in 24", 36" and 48" configurations with multiple lamping and switch options (see ordering key).

Product Specifications

Housing

Precision formed, welded, 12 gauge aluminum housing. Welded and PEM studs are used in order to mount components.

Mounting Base Plate

The mounting base plate is made of 16 gauge cold rolled steel. Mounting holes (6 for 48", 4 for 24" or 36") are provided and one wireway hole. Additional knockouts are provided for optional accessory wiring.

Lens and Lens Retention

The lamp compartment is protected by a .125" pattern 12 lens. The lens is secured with adjustable Z style brackets with weld studs on housing faceplate. Other lens options available. (see product ordering guide)

Finish

The luminaire is in a polyester powder painted Matte White Antimicrobial finish (other finishes available see ordering guide).

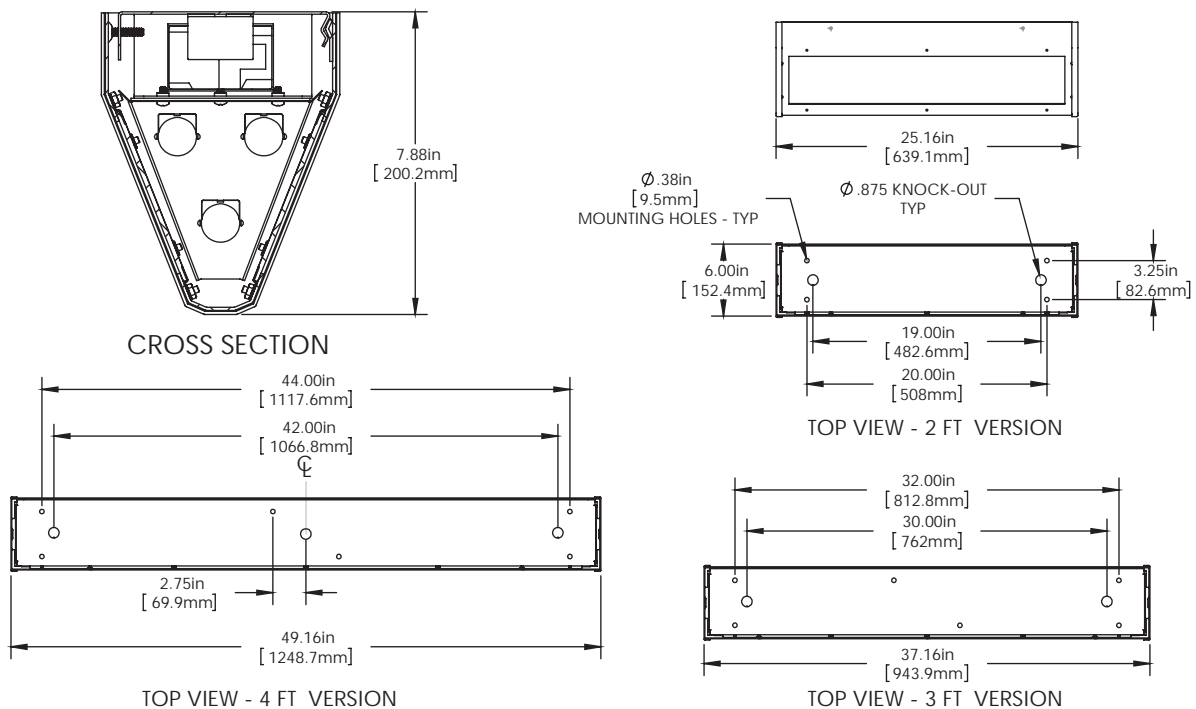
Approvals

Approved to CSA and UL standards.

Electrical

All electrical components are CSA or UL approved. See product ordering guide for optional ballasts. Sufficient knockouts are provided for connections and through wiring.

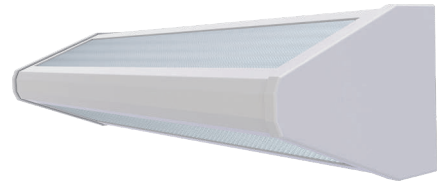
Dimensions



Project	
Type	
Date	
Product Code	
Approved by	

MDWB - Medical Patient Bi-Directional

Surface Wall Mount Bi-Directional Patient Bed Luminaire
T5, T5HO, T8 Lamps
Suitable for Patient Rooms



3587

Product Specifications - Application

The MDWB series by Certolux is a specification-grade, Wall mount, Bi-Directional, Patient bed luminaire. Available in 24", 36" and 48" configurations with multiple lamping and switch options(see ordering key).

Medical Facility

Ordering

MD	WB		3587		-																														
Series	Mount Type	Size	Model	No. of Lamps	Lamp Type	Lamp Watts	Voltage	Options																											
	WB - Wall Bi-Directional	24 36 48		1L 2L 3L	T5 T5HO T8	See Table below	120 - 120V 277 - 277V 347 - 347V UNV - 120-277V UN4 - 347-480V +	Ballast Options <input type="checkbox"/> B01 Ballast Disconnect - In-line Power Disconnect (CSA-UL Req'd For Voltages above 150v) <input type="checkbox"/> B30 Emergency Specified Lighting Battery Pack 1-lamp <input type="checkbox"/> B33 Emergency Lighting Battery Pack 1-lamp Fasteners Options <input type="checkbox"/> C03 Tamper Resistant TORX screws Finish Options <input type="checkbox"/> F06 Snow White <input type="checkbox"/> F09 Easy White <input type="checkbox"/> F12 Easy White Antimicrobial <input type="checkbox"/> F36 Snow White Antimicrobial Packaging Options <input type="checkbox"/> K0 Pack Bulk/Pallet Packed and/or wrapped <input type="checkbox"/> K1 Pack Single Lens Options <input type="checkbox"/> P10 Clear Linear Prismatic Acrylic Lens Pattern 25 <input type="checkbox"/> P13 .125 Clear Prismatic Acrylic Lens Pattern 12 Switching Options <input type="checkbox"/> S1 Switch Pull Chain <input type="checkbox"/> S2 Switch Pull Chain 3 way <input type="checkbox"/> S3 Switch Rocker Fusing and Breaker Options <input type="checkbox"/> T5 Fuseholder, In-line Double Pole <input type="checkbox"/> T6 Fuseholder, In-line Single Pole Wiring Options <input type="checkbox"/> V25 Radio Frequency Filter <input type="checkbox"/> V53 Ground Fault Outlet <input type="checkbox"/> V54 Hospital Grade Grounded Outlet 20A 125V Approvals Options <input type="checkbox"/> X7 Dual CSA/USA Lamp Options <input type="checkbox"/> Z1 Lamps Installed (Specify Type)																											
				<table border="1"> <thead> <tr> <th>No. of Lamps Up</th> <th>/</th> <th>No. of Lamps Down</th> </tr> </thead> <tbody> <tr><td>0</td><td>/</td><td>1L</td></tr> <tr><td>0</td><td>/</td><td>2L</td></tr> <tr><td>1</td><td>/</td><td>0L</td></tr> <tr><td>2</td><td>/</td><td>0L</td></tr> </tbody> </table>	No. of Lamps Up	/	No. of Lamps Down	0	/	1L	0	/	2L	1	/	0L	2	/	0L				Ballast Type N - Instant Start P - Prog. Start R - Rapid Start												
No. of Lamps Up	/	No. of Lamps Down																																	
0	/	1L																																	
0	/	2L																																	
1	/	0L																																	
2	/	0L																																	

Model Numbers relate to specific designs, refer to product photo and Dimension sections for additional details.

Lamp Watts

Size	Nom. Lamp Watts		
	T5	T5HO	T8
24	14	28	17
36	21	39	25
48	28	54	32

+ T5HO

Other options may be available consult factory.
Specifications and data subject to change without notice

